

Installation Manual

BMW MINI CLUBMAN EST
MIN-CLUB-E-B-18



COMPONENTS INCLUDED



FIXING CLIPS



CL-M11 x 2



CL-M12 x 2



CL-T01 x 1



Side Shade Installation

BMW MINI CLUBMAN EST
MIN-CLUB-E-B-18

COMPONENTS NEEDED:



CL-T01 x 1



CL-M11 x 2



CL-M12 x 2

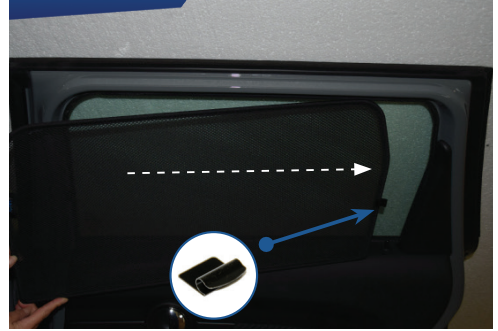
STEP #1

INSERT M11 CLIP INSIDE WEATHERSTRIP
USING TOOL



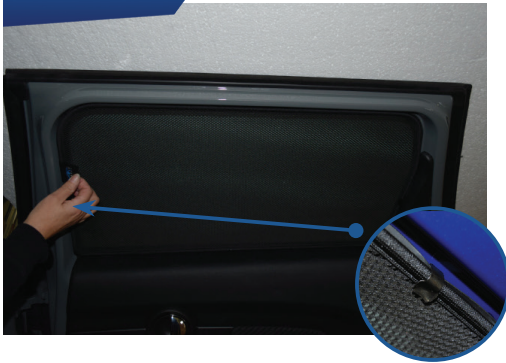
STEP #2

POSITION THE SIDE SHADE



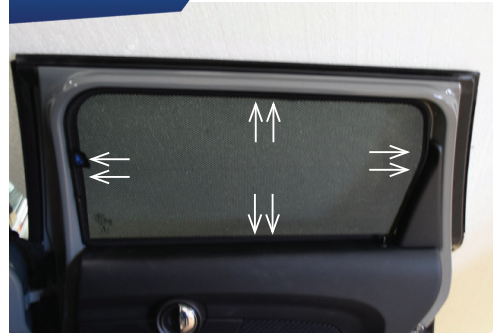
STEP #3

ATTACH SIDE SHADE BEHIND CLIPS



STEP #4

ENSURE SECURELY FITTED IN PLACE



CAR
SHADES