

Installation Manual

KIA RIO 5DR
KIA-RIO-5-B-18



COMPONENTS INCLUDED



FIXING CLIPS



CL-M12 x 2



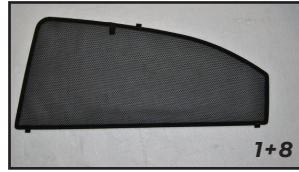
CL-M13 x 4



Side Shade Installation

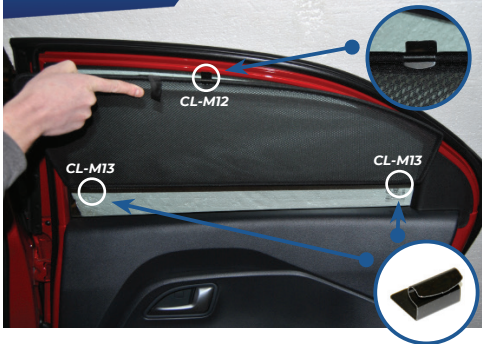
KIA RIO 5DR
KIA-RIO-5-B-18

COMPONENTS NEEDED:



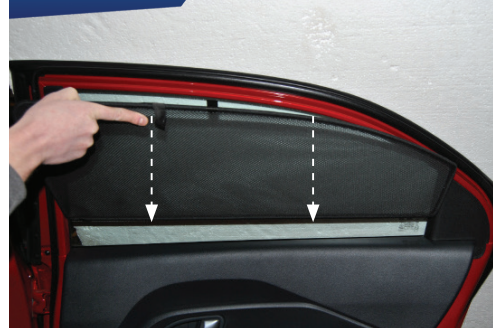
STEP #1

ATTACH CLIPS ON SHADE EDGES



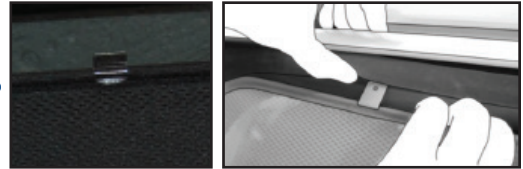
STEP #2

POSITION THE SIDE SHADE



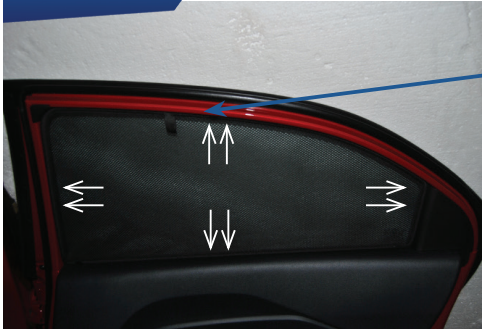
STEP #3

INSERT CLIPS INSIDE WEATHERSTRIP



STEP #4

ENSURE SECURELY FITTED IN PLACE



CAR
SHADES