

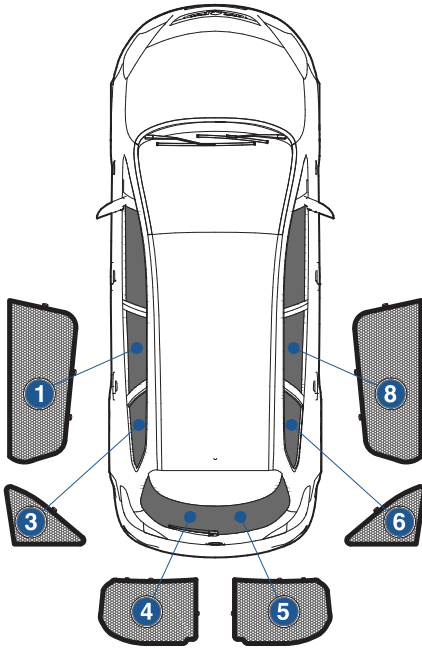
# Installation Manual

VAUXHALL ASTRA EST  
VAU-ASTR-E-D



## COMPONENTS INCLUDED

## SHADES



## FIXING CLIPS



# Side Shade Installation

VAUXHALL ASTRA EST  
VAU-ASTR-E-D

## COMPONENTS NEEDED:



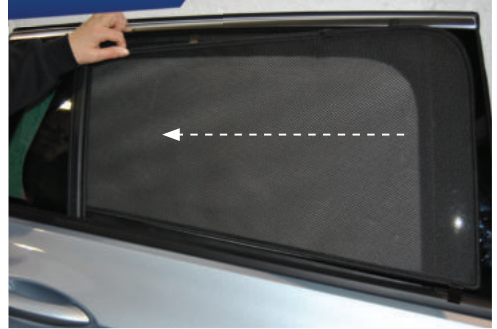
### STEP #1

ATTACH CLIPS ON SHADE EDGES



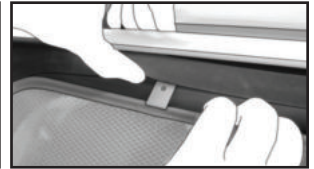
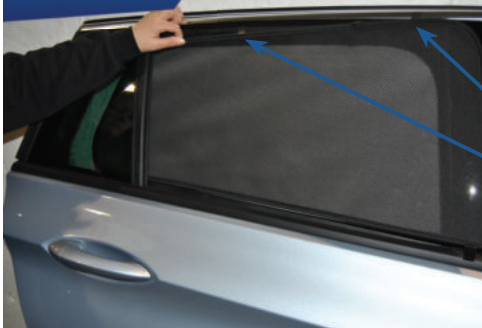
### STEP #2

POSITION THE SIDE SHADE



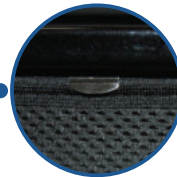
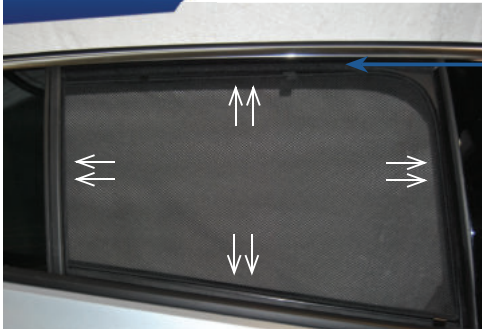
### STEP #3

INSERT CLIPS INSIDE WEATHERSTRIP



### STEP #4

ENSURE SECURELY FITTED IN PLACE

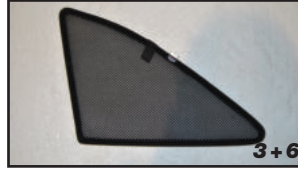


**CAR**  
SHADES

# Quarter Light Shade Installation

VAUXHALL ASTRA EST  
VAU-ASTR-E-D

## COMPONENTS NEEDED:



### STEP #1

ATTACH CLIPS ON SHADE EDGES



### STEP #2

INSERT CLIPS BEHIND INTERIOR TRIM



### STEP #3

ENSURE SECURELY FITTED IN PLACE



# Rear Shade Installation

VAUXHALL ASTRA EST  
VAU-ASTR-E-D

## COMPONENTS NEEDED:



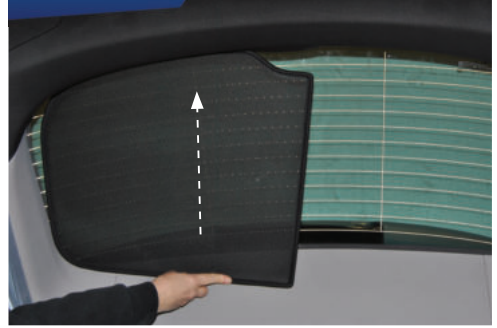
### STEP #1

ATTACH CLIPS ON SHADE EDGES



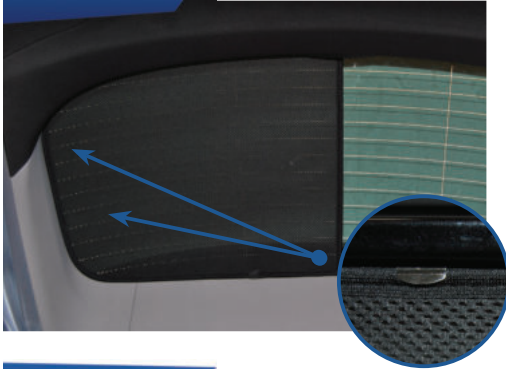
### STEP #2

POSITION THE REAR SHADE



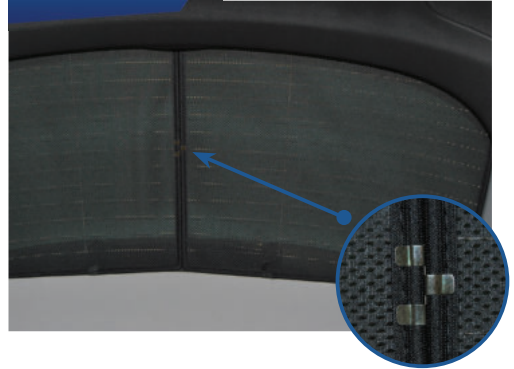
### STEP #3

INSERT CLIPS BEHIND INTERIOR TRIM



### STEP #4

REPEAT THE PROCESS ON OTHER SHADE



### STEP #5

ENSURE SECURELY FITTED IN PLACE

