

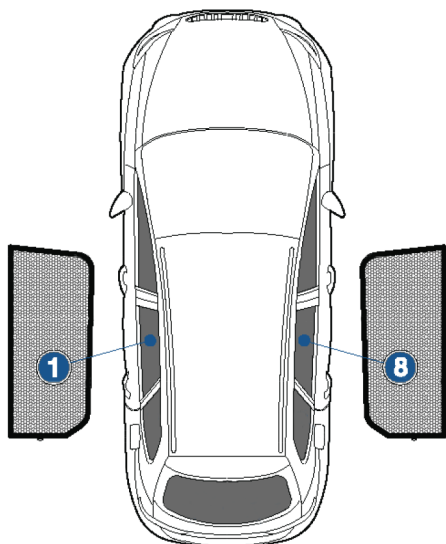
# Installation Manual

SEAT LEON EST  
SEA-LEON-E-D-18



## COMPONENTS INCLUDED

## SHADES



1+8

## FIXING CLIPS



CL-M12 x 2



CL-M05 x 2



CL-T01 x 1

**CAR**  
SHADES

# Side Shade Installation

SEAT LEON EST  
SEA-LEON-E-D-18

COMPONENTS NEEDED:



1+8



CL-M05 x 2



CL-M12 x 2

**STEP #1**

INSERT CLIPS INSIDE WEATHERSTRIP



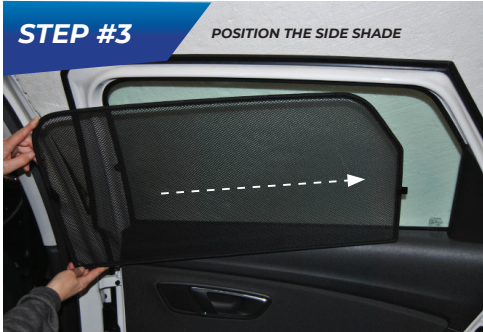
**STEP #2**

ATTACH CLIPS ON SHADE EDGES



**STEP #3**

POSITION THE SIDE SHADE



**STEP #4**

ATTACH SIDE SHADE BEHIND CLIPS



**STEP #5**

ENSURE SECURELY FITTED IN PLACE



**CAR**  
SHADES