

Side doors - mounting with L-mounts

1. Place the L-mounts on the magnets on the sun shade. There are two ways to install the L-mounts, see **fig. 1**. Choose the way that suits your vehicle best.
2. Try on the sun shade by placing it into the window opening. If required, bend the frame for better fit (**fig. 2**).
3. Bend the L-mounts to adapt them to the angle of the window opening (**fig. 3**).
4. Thoroughly degrease the mounting points with isopropyl alcohol.
5. Mount the L-mounts one at a time. Remove the protective film of the double-sided tape from one mount and attach the mount to the magnet on the sun shade. Place the sun shade into the window opening (**fig. 4**) and firmly press the mount to the window frame.

Attention! Observe the following points to ensure sufficient bonding of the double-sided tape:

- Pressure. The harder you press, the better the tape will bond to the surface.
- Temperature. The higher the temperature, the faster the tape is going to reach the ultimate bond strength. It is advised to install the mounts in an environmental temperature of at least 15 °C.
- Resting time after mounting. At 20 °C environmental temperature, 50% of the maximum bond strength will be achieved after 20 minutes, 90% after 24 hours and 100% after 72 hours. During the resting period mechanical load on the mounts must be minimised.

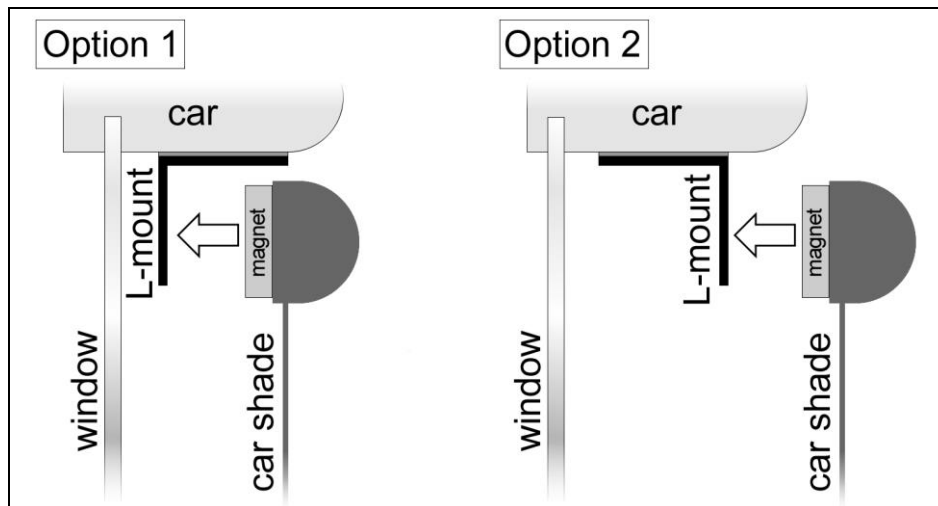


fig. 1

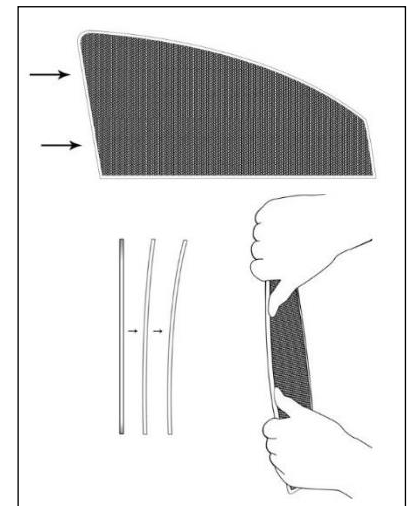


fig. 2

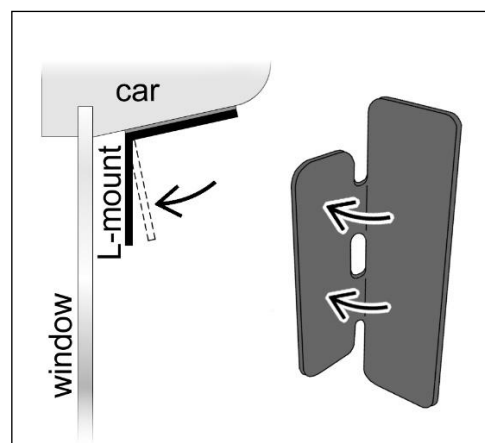


fig. 3

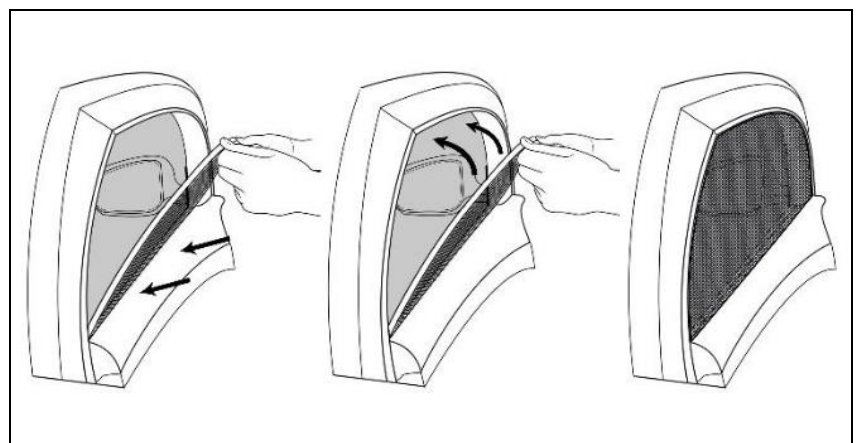


fig. 4

Side doors - mounting with J-mounts

1. Try on the sun shade by placing it into the window opening. If required, bend the frame for better fit (**fig. 2**).
2. Mark the position of the mounting points on the window frame with a pencil.
3. Fold back the rubber window seal at the mounting point (**fig. 5a**). Hook the J-mount behind the door seam (**fig.5b**). Use a spatula to bend it around the door seam (**fig. 5c**).
4. Press the window seal back over the J-mount (**fig. 5d**).
5. Bend the J-mount around the window seal in such a way, that the sun shade's magnet can attach to it (**fig. 5e**).

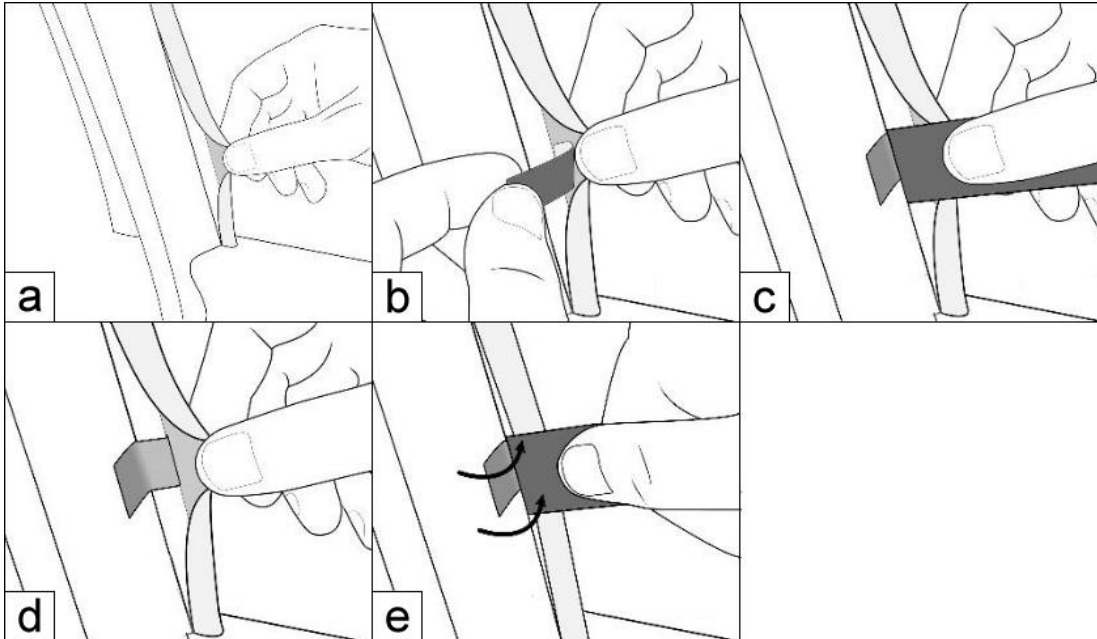


fig. 5

C-pillar windows / quarter glasses

At most car models the sun shades for C-pillar windows or quarter glasses are simply clamped into the window opening, without additional mounts.

Rear window

At some car models the sun shade for the rear window is simply clamped into the window opening, without additional mounts. However, for some car models one or more additional rear window mounts are required, in which case they will be included in the assembly kit. Slide the tailgate mount behind the upper window trim as shown in **fig. 6**.

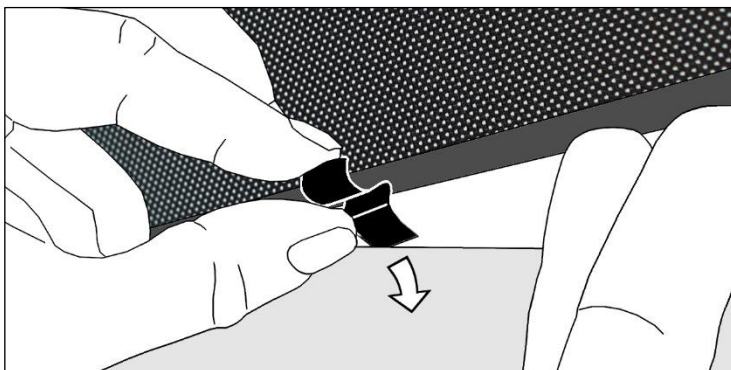


fig. 6